



QUALITY
PARISH
COUNCIL



PARISH COUNCIL MEMBERS

May 2008 to May 2009

Geoffrey Cosgrove
Elected 2000

Chairman 2001 to present
Highways,

John Clayton
Elected 2003

Police Liaison

Michael Denny
Co-Opted 2008

Neighbourhood Watch

Mark Housden
Elected 2003

Finance
Village Youth, Planning Committee

Janice Kennard
Elected 2003

Grants

Gavin McLaggan
Elected 1988

Vice – Chairman
Planning Committee, KAPC, KIG

Jean Roberts
Elected 2006

Planning Committee

CLERK TO THE PARISH COUNCIL

Mrs Sherrie Babington 01634 - 867173
www.detlingparish.co.uk

MEMBER OF PARLIAMENT

Hugh Robertson MP

KENT COUNTY COUNCIL COUNCILLOR

MAIDSTONE BOROUGH COUNCILLOR

Cllr John Horne

COMMUNITY POLICE

PSAO Jennifer Baulf

LOCAL PRESS REPRESENTATIVE

Mrs Margaret Cooke

SOLICITORS

Gulland & Gulland, Maidstone

BANKERS

Co-Operative
Alliance and Leicester

AUDITORS

Audit Commission

INSURANCE

Allianz Cornhill Insurance

PARISH WARDEN

Bob Hannah

Photographs: Jenny Cosgrove

Front Cover: Detling Church this Spring
Inside: Old School Playing Field and The Cock Horse Inn
Back Cover: Jade's Crossing in Winter

FOREWORD

This is our eighth publication and we hope that this report enables you to be aware of the many things that have happened over this busy year.

This past year has seen a long held dream of the village become a reality, when in January 2009 KCC agreed to hand over the Old School Playing Field to the Parish Council. This was a very happy conclusion to a campaign for a village open space that had been going for as long as anyone could remember. A big thank you to Paul Carter, Leader of KCC for his timely intervention and generosity in enabling us to benefit from this long awaited community asset. It is now fenced and open for all to use.

Our other milestone of the year was our success in achieving “Quality Parish” status. This is like a charter mark and recognises that the activities of the Parish Council are to best practice standards. This has been a long time coming and there were numerous tests that we had to pass, the last being fully elected status and for that we needed to have all stood for a contested election, which happened in 2008.

This year we saw the resignation of Robin Powell our Tree Warden and we would like to thank him for the past few years of advice and council, given freely in regard to the trees around the Parish.

We welcomed Bob Hannah, who answered our call for a Parish Warden. His job is part time and involves tidying, maintaining and mending things around the village that have long been sources of complaint and frustration, as we have struggled to get them done by other means.

We were pleased to award Margaret Cooke with the “Villager of the Year” award for her dedication and tenacity to her Press and Church Warden duties.

The focus of local issues was certainly concentrated on the proposed massive KIG development alongside the M20 Motorway near Bearsted. This development, if it were to go ahead, would have a huge impact on Detling and the surrounding Parishes. We have been a founder member of the Joint Parishes Group and have vigorously proposed the plans for this site. This application has now been called in and a Public Enquiry will be held later this year.

Horish Wood has benefited from some excellent volunteer work put in by John Monk. He has spent many an hour trimming and clearing the wood, including re-fencing and path building. There is now a small gap next to the gate for people to gain access and enjoy the circular walks that have been created. We have not formally opened the wood as there is still a lot of work to do, especially in fencing the perimeter. So in the meantime please take care with dogs and children against the busy M20 and A249 that are next to the wood.

Of our disappointments this year, we were constantly being frustrated by the actions of Kent Highways. Very little forward action is being done with the long awaited improvements to the A249. The junction improvements at the top of Hockers Lane did not get funding, but we hope that funds will become available and Detling is able to go it alone and design our scheme.

The large number of pot holes and blocked drains finally came to a head this year with a new KCC's Parish Portal and action being promised. Some things are finally happening.

We were also successful in finally getting some positive action over the speeding lorries along Hockers Lane. Thank you to Clancy Docwra for finally enforcing some good neighbourliness with their employees.

We will continue to work hard on your behalf, but if you have any complaint or comment, please bring it directly to the Parish Council where it can be discussed and help given wherever needed.

LIST OF CONTENTS

FOREWORD	3
THE PARISH COUNCIL	5
Population of Detling	6
Quality Parish Council	6
Parish Chairmen	8
Parish Warden	8
Tree Warden	9
Pond Warden	9
A Piece Of History	10
VILLAGER OF THE YEAR	11
PARISH COUNCIL COMMITTEES	12
Planning	12
KIG – Joint Parishes Group (JPG)	12
Grants	13
Web Site	13
THE VILLAGE HALL	13
VILLAGE DESIGN STATEMENT	14
PARTNERSHIPS	15
Hugh Robertson MP	15
Our County Councillor	15
Councillor John Horne, Our Borough Councillor	15
Rural Policing	17
Neighbourhood Watch (Nhw)	17
Police Liaison	18
Performance Overview	18
Police Community Support Officers	19
Priorities for Detling	19
HIGHWAYS	19
Contract Services	19
The A249 Action Group	20
PARISH OPEN SPACES	20
The Larches	20
Quiet Lanes	21
Scragged Oak Viewpoint	21
Old School Playing Field	22
Horish Wood	23
Bredhurst Woodland Action Group	23
CONSERVATION AREA	24
LOCAL BUSINESSES	24
Local Services	24
The Cock Horse Inn	25
Detling Community Enterprise Community Interest Company Ltd	26
Kent County Showground	26
The Village Stores	26
PARISH ORGANISATIONS	27
Detling Badminton Club	27
Detling Short Mat Bowls Club	27
Detling Cricket Club	28
The Detling Players	28
The Detling Singers	28
Detling Friends Of Heart Of Kent Hospice (Dfhkh)	29
Detling Church	29
Friends Of Detling Church	30
The Detling Companions	31
The Detling Society	31
Pre-School Playgroup	32
The Womens Institute (W.I.)	32
Yoga	33
Pilates	34
Spangles	34
The Jade Appeal	35
FINANCIAL MATTERS	36

THE PARISH COUNCIL

Established: 1884

The Detling Parish Council represents an electorate of 621 people on the electoral roll living in 337 houses.

The Parish is 6.16km long and varies between 250m to 1.42km wide, extending from the M20 through the village over the North Downs Scarp, roughly centring on Scragged Oak Road and extending towards the M2 in the north.

Detling is bordered to the South and West by Boxley Parish, to the East by Thurnham and the North by Stockbury and Bredhurst Parishes.

The Parish Council is composed of seven councillors. Elections are held every four years with the next election being due in May 2011. We meet in the Committee Room of the Detling Village Hall at 7.15pm on the first Tuesday of each month except January and August. Additionally, our AGM and Annual meeting with the Parish are held around the third week in May.

All meetings are open to the public and press. The council have benefited from a good level of support and attendance over the year.

Since the last election in 2007, there have been 22 Council meetings; the overall attendance rate of each councillor has been recorded as:

Geoff Cosgrove	91 %
John Clayton	86 %
Mike Denny	62 % (Out of 13 Meetings)
Mark Housden	77 %
Janice Kennard	86 %
Gavin McLaggan	95 %
Jean Roberts	77 %

Over the past year, this gives an average attendance rate of 81% to each meeting, a decrease (from 87%) over the previous year.

The Parish has a permanent Planning Committee, which meets at 7pm, prior to each main Council meeting.

The Council is an equal opportunities employer with one part-time employee, our Parish Clerk, Sherrie Babington. Sherrie has now been in the post since June 1998, working from home on behalf of the Parish. We share her services with the Parishes of Thurnham, Hoo and Leeds.

The Parish also benefits from the regular reporting of one of Kent Messenger's local correspondents; Margaret Cooke, who keeps the village in the news on a weekly basis.

The Council has in place the following Policies and Procedures, in accordance with its Standing Orders, which are revised on a regular basis.

Equal Opportunities
Disability Policy
Financial Risk Assessment

Code of Conduct
Complaints Procedure
Parish Elections

Population of Detling

Year	Population	Male	Female
1801	253		
1811	281		
1821	321		
1831	372		
1841	318		
1851	353		
1861	344		
1871	319		
1881	336		
1891	331		
1901	289		
1911	270		
1921	281		
1931	252		
1941	War Years No Census		
1951	596	289	307
1961	748	373	375
1971	712	367	345
1981	792	405	387
1991			
2001			

If anyone has any information or comment to add to this table, then please forward it to the Parish Clerk.

Quality Parish Council

Awarded: 2008

Detling Parish Council is celebrating after being awarded the prestigious Quality Council Status in September 2008. Achieving Quality Status demonstrates that the Council meets certain standards expected from an effective, representative and active Parish Council.

The tests exceed the statutory duties and require the council to be properly managed, have effective communications, uphold high standards of conduct, work closely or in partnership with voluntary and community groups and other authorities and to have a qualified Clerk.

There were numerous tests we had to pass. These included a Council that had all stood for election, a Clerk that was qualified plus a number of others, including the regular meetings and the publication of our Annual Report.

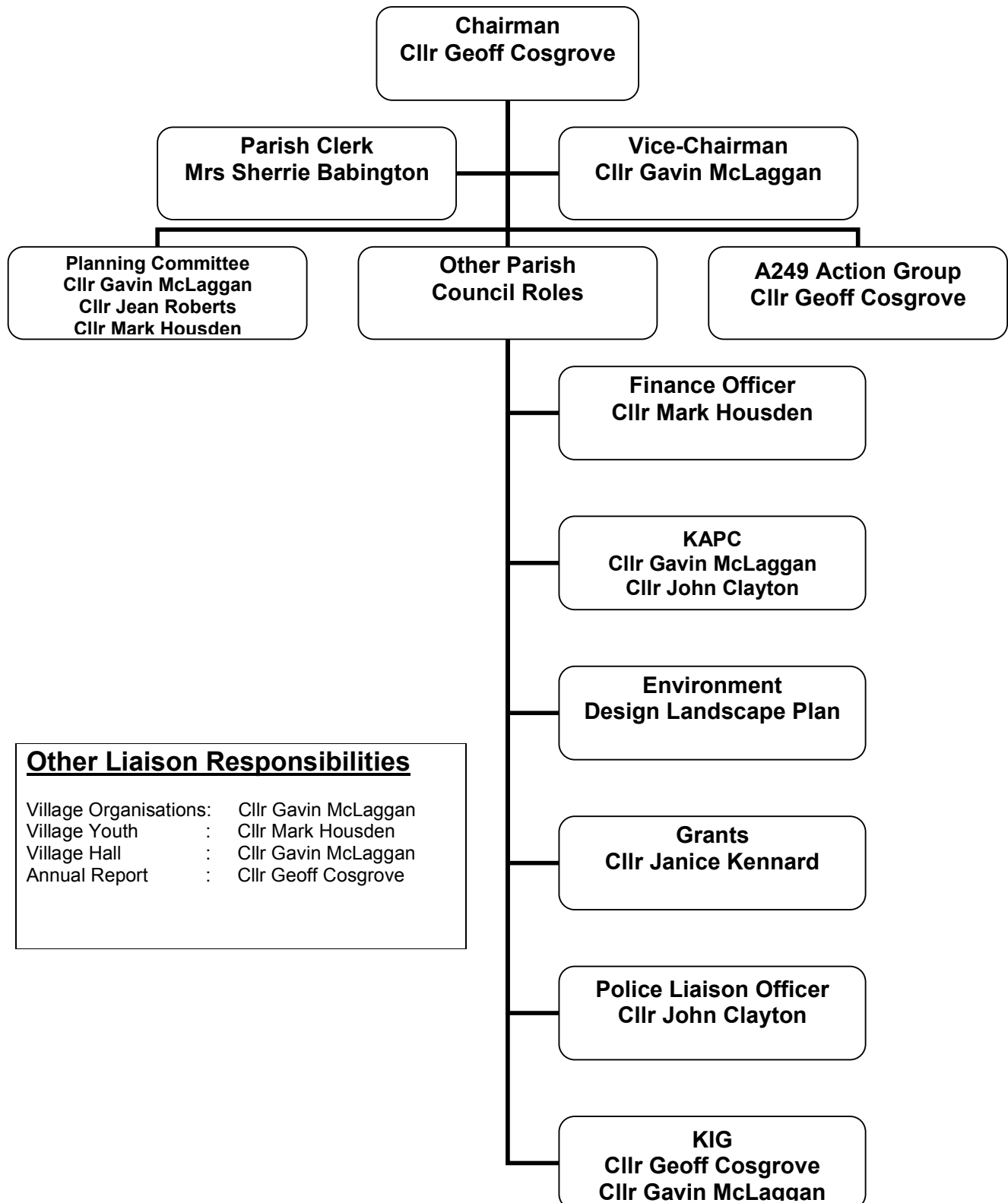
It is of great credit to all of Detling's Councillors to have persevered to bring this accreditation about. In addition, special mention must go to Sherrie, our Clerk who after years of study has finally, become qualified herself.

So, what does this mean for Detling? Well, the scheme was set up to ensure that Parishes were up to the standards expected by government.

It therefore follows that a Quality Parish has some added weight to its representation to Borough and County Councils, in its push for improved services. There was a hope that we could take on some of the services now provided by Maidstone Borough Council, so we could ensure that they are carried out to our standards and satisfaction. But that is still in discussion, however this does not detract from the fact that Detling is one of the few Parish Councils to have achieved this sought after accreditation. So well done to everyone involved.

DETLING PARISH COUNCIL

ORGANISATION



Parish Chairmen

Term of Office	Years in Office	Chairman
1884 - 1899	15	W F Mercer
1899 - 1904	5	J N Badcock
1904 - 1913	9	R Cooke
1913 - 1927	14	W J Naylor
1927 - 1931	4	Charles Brown
1931 - 1946	15	F Croft
1946 - 1968	22	A Hooker
1968 - 1973	5	Stanley E Rowe
1973 - 1988	15	Norman Bingham
1988 - 1992	3	Alan G Cooke
1992 – 2001	10	Gavin McLaggan
2001 - Present	8	Geoff Cosgrove

Parish Warden

Contact: Bob Hannah

Established: 2009

This year the Parish identified a need for a part time Parish Warden. We were pleased that Bob Hannah stepped forward and offered his services.

He started his duties on the 5th April 2009 and they include:

- Grass cutting (Excluding the Old School Playing Field).
- Strimming of Scragged Oak Viewpoint, Jade's Crossing and Horish Wood
- Litter picking within the Village Area (Additionally litter bin emptying and tidying, just prior to village functions; Remembrance Parade, Christmas Fair etc.)
- Maintenance of the "Old School Playing Field"; Pruning, Leaf Sweeping etc.
- Painting / Preservation to Tudor Gate, Millennium Statue Railings, Bus Shelter, Benches, Notice Boards etc.
- Cleaning of the telephone box, bus shelter and the adjacent seating/paved area.
- Ensure Parish Notice Boards are clean, tidy and serviceable
- Cleaning, routine maintenance and minor repairs of Village Assets (Bus Shelter, Litter Bins, Benches/Seats, Fences etc.)
- Planting, Weeding and Maintenance of flowered areas in the Village Area
- Weed killing to footpaths
- Removal of graffiti (where practicable)
- Installation / Replacement of minor Parish Assets; e.g. litter bins etc.

Any changes to this must be requested to the Parish Council, as instructions can **ONLY** be issued by the Parish Clerk.

Tree Warden

Contact: Robin Powell

Established: 2003

01622 - 734622

We were disappointed to learn recently that Robin was relinquishing his role as Parish Tree Warden to move on to other interests and we would like to thank him for his efforts over the past few years.

Robin has advised the Parish Council on planning applications that have affected the village trees, which were subject to tree preservation orders and counselled a number of residents who sought his advice on many arboreal issues.

The past year has been quiet and the Parish Council is now looking for someone to take over this interesting role. Training by external courses will be supported and if you are interested then please let the Parish Clerk know.

Pond Warden

Contact: Chris Buckingham

Established: 2007

Ponds in general

The charity Pond Conservation has made extensive studies of ponds in the United Kingdom and has adopted the definition that a pond is 'A man-made or natural water body which is between 1 m² and 20,000 m² in area, which holds water for four months of the year or more'.

Pond is a variant form of the Old English word pound, meaning a confining enclosure. In the same way that cattle are often enclosed in a pound, so water is enclosed in a pond. Typically, ponds have no surface outflow to drain off water and they are often spring or surface water fed. This closed environment means that they develop their own self-contained eco-systems.

The plant life in a pond is generally established in zones that reflect the depth of the water. The deeper water Spiked Water-Milfoil, Yellow Iris in the shallows and specimens like the Marsh Marigold that thrive in the boggy margins can all be seen as an indicator of the state of a pond.

Over time, as soil is washed in and dead vegetation rots down on the floor, silt levels rise and the types of plants in occupation will change to favour the shallow water or bog loving specimens. This can continue until the whole area is silted up and only supports marginal plants, although it can then remain in this state for generations. However with rising global temperatures there is a greater chance of these areas drying out completely and being lost forever.

Animal life, or the lack of it, is an indicator of the quality of the pond water itself. Members of the family of true worms, together with snails, are likely to be found in most ponds as they can tolerate some pollution whereas Stonefly nymphs are very susceptible to it and will only be found in a clean pond that has a high oxygen level. The condition of a pond is determined by dipping the water, counting the species in the sample and applying a simple mathematical formula. The resulting number, between 0 and 10, reflects the quality of the water in that pond.

Reptiles and amphibians are also dependant on ponds as a source of food and a place to breed. As a group, they are extremely vulnerable to very small-scale damage to their environment as they are normally found within isolated fragments of habitat surrounded by extremely hostile areas.

Luckily, Detling has bucked the national trend for pond loss and there are now more ponds in the parish than there were one hundred years ago.

Ponds within the Parish of Detling.

There are seventeen ponds within the parish boundary and the vast majority of these are close to the southern edge. Only one of these ponds has public access so please respect this and do remember that ponds can be very dangerous places, especially for young children.

A full report giving exact locations, sizes and the results of seasonal flora and fauna surveys will be presented to the Parish Council by November and you will then be able to download a copy from their web site.

- 1 Within the Conservation Area and just to the east of The Granary. This pond may have been dug to serve the farm complex, in which case it would have been clay lined to retain water.
- 2 To the east of Hockers Lane and just north of the railway line. A large and ancient natural pond that has been enlarged over the years and is very deep in places.
- 3 To the west of Hockers Lane and just north of the railway line. A fairly shallow ancient pond within the remnant of the most northerly section of Horish Wood.
- 4 To the west of Hockers Lane and just north of the M20. An artificial deep-water collecting pond.
- 5 In the Whippet racing meadow to the south of the M20.
An ancient pond that was enlarged when the M20 was first constructed. This pond is steep sided and very deep.
- 6 Within the garden of "Honeyhills", Hockers Lane. A large man made duck pond that was excavated in the 1970's.
- 7 Three ponds to the eastern edge of Hockers Lane. Two very small round ponds and a shallow ribbon pond that sit within a few feet of the twisty southern section of Hockers Lane.
- 8 On the edge of the golf course. A small shallow natural pond close to the edge of Honeyhills Wood.
- 9 Two ponds within the front garden of Hockers Cottage. These two natural shallow ponds, one circular and one elongated, sit to either side of the path to the front door.
- 10 Five ponds within The Hockers at the southern end of the parish.
- 11 Two small circular ponds, a ribbon pond, an extremely shallow expanse of water and another shallow pond sit almost in a straight line through the very lowest part of the parish, in The Hockers.

A Piece Of History

The name Robert Rugg first appeared in 1705 when Robert Rugg married Patience Rich, daughter of Thomas Rich, at that time principle landowner in the parish. His great grandson, also Robert Rugg, bought East Court Farm from George Talbot Hatley Foote on his death in 1821.

In 1849, the Rugg family added West Court to their property.

The school, built in 1856, undertaken by the Rev Robert Cobb (1831 to 1870) was erected at the cost of £680. The land being given by Robert Rugg and valued at £162, the balance £458 was funded as an endowment.

The school closed in August 2007.

VILLAGER OF THE YEAR

Established: 2005

The Parish Council presented the community award for a person from Detling, who has made a significant contribution towards the life of the village.

We were pleased that Mrs Margaret Cooke was nominated and the Parish Council was extremely pleased to recommend this award in recognition of her voluntary help within the community.

David Humphrey volunteered to create the superb illuminated presentation certificate and local shopkeeper Mike Tamsett MBE made the presentation.

The citation read:

"It was our great pleasure to have received a nomination this year for the Villager of the Year Award. And it was unanimously agreed that this year's recipient would go to Margaret Cooke

Margaret Cooke won this Detling Community award for 2008 for her significant contribution to the village and its organizations.

Margaret is the local press correspondent for the Kent Messenger and the Downs Mail and regularly writes a column keeping the village in the news, which for a spread out community is a vital lifeline.

She has kept it going, because she feels it is so important to the village. This is why, for such a diverse and small community it is so important that the entire village find out what is going on, when and where.

She has also recently taken on the role of churchwarden, which due to the recent closure of the local school has become a significant burden. But she has grasped this added responsibility, even though she is finding it a burden; especially at her time of life. But she is not running away from the immense responsibilities that this now brings.

Her duties to the church and village throughout this very difficult time of her life are truly praiseworthy and an inspiration to others.

Margaret is also a stalwart of the local Woman's Institute and can always be relied upon to help out in whatever capacity at the numerous village events and fund raising being it for the church the village or one of the many charities that the village supports.

Margaret also helps out with the Detling Companions, a local network of friendship given freely to villagers in need of comfort and support.

It is for her general and selfless support to the village that the Parish Council has this year, felt Margaret Cooke to be a very worthy recipient of 'Villager of the Year for 2008'

For this coming year, 2009 we will be pleased to receive nominations by September.

Past recipients of this award have been:

Mrs Leslie Savage	2007	Presented by: Reverend Elizabeth Attawell
Mrs Thelma Ford	2006	Presented by: Lord Sandy Bruce-Lockhart CBE
Mrs Pat Follett	2005	Presented by: Mr Geoff Cosgrove TD

PARISH COUNCIL COMMITTEES

Planning

Gavin McLaggan, Chairman of the Planning Committee

01622 - 738109

During the year the Parish council received a total of 21 planning applications for consideration.

Of which we had:	Objections to	- 4
	Comments on	- 2
	No Objections to	- 15

In addition, we had 1 Tree Preservation Order application to consider, to which we did not object.

The two major issues were the application relating to the redevelopment of the MKE site and the on-going KIG application. With the MKE site in The Street, the Council raised objections based on the principle that we should support the Conservation Area which is currently being updated by Maidstone Borough Council. MBC has supported our views and we can expect an amended application in the future.

At the time of publication of the Parish Council Annual Report, Maidstone Borough Council has considered the KIG application and rejected it. But this does not mean much as the application has been taken to appeal by the applicant. This means that it will be considered at a Public Enquiry in the autumn. The enquiry will be run by a government inspector who will make a recommendation to the Minister. It will be the Minister who makes the decision. Even if the Minister rejects the application, that may not be the end of the matter.

A similar application near St Albans, which was rejected last year, is now the subject of a re-application. It could go on for years.

So we must keep up resistance. Illegitimi non carborundum!

KIG – Joint Parishes Group (JPG)

Contact: Richard Jacques

Established: 2007

01634 - 867173

Kent International Gateway, Land West of Junction 8 M20, Maidstone

This is a consortium of 15 Parish Councils representing 24,000 electors which have joined together to fight the proposal. The consortium is made up of the following Parish Councils: Bearsted, Boxley, Broomfield & Kingswood, Chart Sutton, Detling, Downswood, Harrietsham, Hollingbourne, Langley, Leeds, Lenham, Otham, Sutton Valence, Thurnham, and Ulcombe.

The battle against the threat of the KIG development continued throughout the year, gathering facts and figures to counter the applicant's case.

The Joint Parishes Group remains united and is prepared to make a suitable contribution to the costs of the fight. The main costs will come at the Public Enquiry where it will be necessary to employ expert witnesses, QCs etc. We expect that KCC will fund most of this but the Parishes are prepared to do their bit. The Public Enquiry will start in October and is expected to last six weeks.

PLEASE GIVE US YOUR SUPPORT BY WRITING LETTERS (deadline 29 May) AND BY TURNING OUT TO THE ENQUIRY – EITHER TO DEMONSTRATE OR JUST TO BE THERE AS A SILENT WITNESS – IN OTHER WORDS, SHOW THAT YOU ARE VERY CONCERNED.

Grants

Contact: Janice Kennard

01622 - 737270

With the donation of the Old School Plying Field to the Parish by KCC, the Parish Council wanted to make this space open and available to the community.

New fencing, a gate and pathway have been installed and a grant of £350 was acquired from Maidstone Borough Council (John Horne) towards this project as well as £1,200 from our KCC Member's Fund.

A further grant of around £1,500 has been applied for from the Mayor's Fund to be put towards the cost of litter bins, a notice board and confirmation of this is expected soon. But this was not successful.

Additional grants will be applied for this year towards the erection of fencing along the A249 side of Horish Wood in order to make this wood safe for the community to visit.

Web Site

Contact: Parish Clerk

Established: 2005

www.detlingparish.co.uk

The Parish Council is in the process of changing its website provider to one supported and hosted by KCC.

It is anticipated that this will be up and running by the beginning of June 2009.

We would like to thank Lee Baker for his work on the current website over the past three years.

If anyone or any village organisation wants articles to be published on the website then they should be sent to the Parish Clerk. It is everyone's responsibility to make sure the information on the website is up to date and relevant. Please report any errors or corrections directly to the Parish Clerk.

THE VILLAGE HALL

Registered Charity No. 269784

Contact: Richard Alexander

Established: 1976

01622 - 858361

The Hall continues to be run for the benefit of the Village and its organizations who find it to be an excellent venue for their various activities throughout the year. It is also good to be able to report that many outside organizations continue to be interested in using the Hall for their activities on a very regular basis and, as a result, we receive a good number of enquiries from other interested groups.

Under the watchful eye of our Maintenance team led by Edward Rubie, we are able to keep on top of minor repairs to any damage or general upkeep problems thus retaining a well presented Hall for the use of our hirers. During the year, it was decided to "up-date" the then Committee Room and this was achieved by carpeting the floor, new lighting, chairs and fittings as well as new paint.

The improvements have received unanimous approval from all users and it was, as a result of enhancing the facility and to better reflect the amenities, decided to re-name the room - "Meeting Room". The costs of this work have been met out of Hall funds, together with a generous grant from the Parish Council, for which grateful thanks are extended.

Under the careful control of our Treasurer, Pat Boetius, the accounts have continued to remain healthy, to the extent that we now feel able to consider one or two new projects to further improve some of the Hall fittings and fixtures which hopefully will be completed in 2009/10.

Our Booking Clerk, Penny Day, has created, and runs, our Web Site which has been most successful in any ways. Not only does it receive many "hits", but also results in a good number of bookings online. It is to be hoped that this will continue to generate more bookings, and thus income. There are also facilities where local groups can advertise their forthcoming events as well as various links, including to the Parish Council.

A very successful Christmas Fair was, under the direction of Lesley Savage, once again held to raise funds for the Hall and she is to be congratulated for an excellent day. With her band of willing helpers she created a first class Fair with much to do and enjoy. Of course the children were not forgotten and they really enjoyed visiting Father Christmas in his Grotto. We were pleased to invite Mike Tamsett MBE to open the Fair which he did after presenting, on behalf of the Parish Council, the Community Award to Margaret Cooke.

The Committee is comprised of representatives from the various organizations in the village who all are most keen to ensure the Hall continues to operate for the benefit of all villagers. Amongst these volunteers, we are fortunate to have some with particular skills and we are very grateful for them, as well as those nominated certain responsibilities. Our thanks are therefore extended to all the Committee for their hard work. We would also wish to thank the Parish Council for their continued support over the year.

VILLAGE DESIGN STATEMENT

Contact: Robin Grimble
Submitted by John Munson

Established: 2006

01622 – 735057

Following on from the greatly admired Detling Village Plan has been the follow up, The Village Design Statement.

This Design Statement is intended to become, when accepted by Maidstone Borough Council, part of that collection of statutory documents that have to be taken into account, when planning questions arise.

With the aid of a grants from Detling Parish Council and The Civic Trust, well attended meetings have been held in The Village Hall with further chances for residents to view possible contents of any draft plans to be involved in the final statement, on several evenings in The School Hall.

The steering group have been heartened by the considerable amount of ideas and feedback from local residents. The eventual document will express the interests of local residents in how they would wish to see the whole Parish grow, not only in the built environment but also in its surrounding landscapes. At present, the many ideas and submissions by residents are being collated and analysed so that a final draft can be presented for further discussion and acceptance.

PARTNERSHIPS

During the course of the year the Parish Council has been very pro-active in its liaison with external authorities and bodies.

Kent County Council
Maidstone Borough Council
Kent Association of Local Councils

Kent County Showground
English Nature
British Trust of Conservation Volunteers

The Maidstone Police
Maidstone Area Mobile Library
Campaign for the Protection of Rural England

Kent Wildlife Trust
Action Communities in Rural Kent
Kent Men of Trees

Of our more regular contacts and partnerships we maintain close working relationships with our Member of Parliament Hugh Robertson MP and Maidstone Borough Councillor John Horne.

Hugh Robertson MP

Elected : 2001

01622 - 851616

For anyone living on the eastern side of Maidstone over the past year, it has been hard to escape the shadow of the proposed Kent International Gateway development. I saw many of you at the various public meetings, the demonstration and march at Bearsted Green and the open planning meeting at Maidstone Studios.

Maidstone Borough Council have now officially rejected the proposal with the result that attention now turns to the Planning Inquiry currently scheduled for October. It was clear from the Maidstone meeting that the applicants will concentrate on the supposed environmental benefits for the greater South East, ignoring the increased traffic that it will generate locally, and the technical arguments for a rail/road interchange at this particular point on the respective networks.

I remain completely opposed to this proposal which is an inappropriate neighbour for both an Area of Outstanding Natural Beauty and the three villages that it will border. However, it also seems nonsensical to site a rail freight interchange in the middle of a motorway network rather than at either end. I strongly suspect that it is a proxy for another type of development.

It is reassuring for all of you that your Parish Council, the Joint Parishes Group, the Borough Council, County Council and your local MP are all united in their opposition! Only the unelected regional authority and elements in government have come out in favour. However, it will require a great deal more work and persistence from all of us if we are finally to see off this appalling proposal.

Our County Councillor

Elected : 2009

Since Lord Sandy Bruce-Lockhart died last year we have been without County Council representation. There is to be an election on 4th June 2009.

Councillor John Horne, Our Borough Councillor

Elected : 2001

01622 - 739377

Last year I mentioned two points; the Detling Conservation Area appraisal and my appointment by English Heritage as the Historic Environment Champion for Maidstone. Accordingly, I have kept a

very keen eye on planning applications within the DCA and have spoken strongly against such proposals where they failed, in my opinion, to advance the integrity of the Conservation Area.

Local residents have been much concerned with the unbridled use of large trucks and agricultural machinery which often decimates the rural lanes and adjacent hedgerows. Added to this, has been the large scale muck spreading with an unacceptable and penetrating odour. Regretfully, the role of the MBC in this matter is restricted to an environmental odour nuisance. However, I have recommended that the relevant Overview & Scrutiny Committee at MBC should consider this multi-agency problem during the next municipal year. I hope that they may be able to suggest a way forward.

I am always in admiration of the high quality of the productions by the Detling Players. Add them to the Christmas Eve finding of the Christ Child and we have a quality that is in the list for Oberamgau. Disaster nearly struck last Christmas with an insuperable problem of the non road closure. I was pleased that this was an issue for MBC and with a weekend phone call to the Director this was resolved in time.

The residents of Hockers Lane are tired of the rat run speeding past their houses and the need for this traffic calming has previously been before the Maidstone Joint Transportation Board. I have to say that the Pipkin scoring for the scheme was low. Therefore, I spoke of the assessment flaws in the appraisal and requested that this should be referred back to the Parish Council. Now in the April papers of the Board it is listed in the Integrated Transport Programme for Maidstone and states; "The scheme is to be worked up with the Parish design group for a potential bid in 2011/12".

With Cllr. Mrs. Parvin and other colleagues I have taken a keen interest in the future water supply plans of the Kent Water Companies. We expressed concerns when the initial water management plans were published. We then saw the Statement of Response from the companies and had the benefit of a presentation from the Head of Water Resources. In conclusion, we still retained considerable concerns for the future safeguard of potable supplies of fresh water for the Maidstone area. We sent a Side Note to the Secretary of State and asked him to issue a Direction for a full and independent evaluation of an additional ground water reservoir at Thurnham to augment the Thurnham Aquifer, so as to ensure the water supply for Maidstone.

Currently, I am the Chairman of the MBC Audit Committee. Last year the Council achieved a top scoring from the Audit Commission. However, there can be no resting on our laurels for the national assessment has now been altered. It is based on the outcome of performance with our other "partners". The technical name is Comprehensive Area Assessment. This poses challenges and opportunities. We shall do our best to meet them.

Last year, the late, Lord Sandy Bruce-Lockhart a much loved County Councillor wrote in the Annual Report of the blight of the Kent International Gateway planning proposals. This has truly blighted our lives for the last 18 months plus. A consortium of fifteen Parish Councils was formed to ensure that the views of over 24.000 parishioners were heard. I am pleased that Detling Parish Council has played a key role in this group. Together with other MBC councillors I have given this task considerable time and effort.

To take Lord Sandy's words; "The proposal is immensely environmentally damaging..... and is totally unacceptable." As I write, the matter will go to the MBC planning committee on the 7th May and is then listed for a Public Inquiry commencing on the 15th September 2009. We will need the help of you all.

ALL MY VERY BEST WISHES

Rural Policing

Contact: PC Lee Cumberland and PCSO Jennifer Baulf
604392

07772 226179 01622 –

maidstonerural.neighbourhood@kent.pnn.police.uk

Hi we are your local officers. I am Jennifer Baulf, your local Police Community Support Officer and I work alongside PC Lee Cumberland. Together we have policed the area of Detling approaching two years now and hope that over this period we have helped and supported the area to make it a safer place to live in with low crime.

We are regularly in and around the village and have a 'base' at Detling village Hall. PCSO Jennifer Baulf holds monthly surgeries here where all local residents are welcome to come and discuss any policing issues with which I may be able to assist.

As we mentioned last year the most important and fulfilling part of our job role is engaging with the community, being seen by residents and being accessible to those that wish to speak with us. We are contactable by various means - by telephone, email, or if you see us in the village do not hesitate to ask us any questions that you may have. Our details are advertised throughout Detling and are on the Kent Police website.

Speeding in Hockers Lane continues to be a problem for residents, as people often use this road as a cut-through when there is congestion on the A249 at Detling Hill. This is mainly in the morning rush hours and to a lesser extent in the late afternoon/early evening. We continue to carry out speed enforcement in the area, educating individuals and dealing with those persons who use excessive speed by issuing tickets, fines and penalty points. Having said this, there are noticeable improvements not only from a police perspective but also from a number of residents that have spoken to us when speed enforcement has taken place.

Speedwatch is still to be set up in the village, as it requires volunteers from the village to make this happen. If anyone wants to be part of the scheme they can contact me or indeed the parish council and details will be passed on to the Speedwatch unit at Maidstone Police station.

In the last year Detling has seen a decrease in the volume of crime. Previous problems were caused by the increase in lead prices, which saw the church become a victim of multiple lead thefts. In response, police carried out targeted operations, by stop-checking vehicles being used to transport these stolen goods and made several key arrests. This does not seem to be a problem for Detling anymore. Residents are asked to report anything that they believe to be suspicious in order to tackle crime.

Anyone who wishes to contact me to discuss any policing issues in Detling can do so through the Maidstone rural neighbourhood office on 01622 604392, or by emailing me at maidstonerural.neighbourhood@kent.pnn.police.uk

Neighbourhood Watch (Nhw)

Contact: Viv Hammond
Submitted by: Mike Denny

Established: 1992

01622 - 867173
www.detlingnhw.co.uk

There are now seven neighbourhood watch co-ordinators covering the village and Scragged Oak Road. We meet every few weeks to discuss current issues and forward plans.

Over the past twelve months we have:

1. Arranged the installation of new style Neighbourhood Watch signs at strategic locations around the village
2. Made contact with other local NHW groups and the Police to exchange ideas on structure and ways of keeping in touch with the community.
3. Carried out several leaflet drops throughout the village relaying information from the Police and other incidents.
4. Published updates and alerts in the Parish magazine.
5. Produced a new NHW website (April/May 2009).
6. Carried out a major recruitment campaign throughout the village, supported by Detling Parish Council, resulting in more than 70 homes joining up and the creation of a database including email addresses for many, enabling instant and efficient distribution of future alerts and news.
7. Made plans to participate with a new NHW stall at village events, to further raise awareness of the group and encourage more villagers to join.

Our future plans include distribution of information packs which will include window stickers to all members of the Neighbourhood Watch, the purchase of a banner to promote the group at events and more campaigns to increase our membership.

We are grateful for the co-operation of the Parish Council and Mike in the village shop for agreeing to act as a drop off point for membership leaflets.

We hope for another successful year with many more of our neighbours joining the group.

Police Liaison

Contact: John Clayton

01622 - 630782

Performance Overview

There has been a reported overall reduction in crime in local rural areas of 8.7%.

But it can be seen from the information below that for Detling and Thurnham the 'All Crime' figures have increased by 14.1% with a large increase in burglary of 16.0% in the past 12 months.

Summary for Detling and Thurnham					
Trend	Crime type	Last 12 Months	per 1,000 population	Change	
	All crime	218	74.7	▲	14.1%
	Anti-social behaviour	77	26.4	▲	6.9%
	Burglary	29	9.9	▲	16.0%
	Robbery	0	0.0	▼	0.0%
	Vehicle crime	43	14.7	▼	-6.5%
	Violence against the person	15	5.1	▼	-6.2%

The statistical information contained on this page is rounded and for guidance only. Please refer to the most recently published Home Office crime statistics for further detailed information.

Various Police initiatives have taken place in our area in recent months; Operation Tree has been running to prevent poaching and spot checks have taken place with criminal arrests being made.

Operation “Safer Spring”, targets having police officers on the streets to deal with criminal damage and Anti Social Behaviour, Car Boot sales have been targeted in an effort to recover stolen articles.

Increased numbers of stolen cycles have been reported in our area, ID bike stamping with the Post Code etc is recorded and can be used to locate owners if bikes are found. Bike ID stamping is encouraged and can be carried out by the Police.

Police Community Support Officers

PCSO recruitment is currently standing at 10 and recruitment is continuing.

Detling is fortunate to have PCSO Jennifer Baulf as our neighbourhood officer representing Detling and Thurnham, if you have any local concerns about policing in your neighbourhood Jennifer can be contacted on Tel.01622 604392.

PC Lee Cumberland is our neighbourhood officer for Boxley, Detling and Thurnham, working closely with the PCSOs in the local areas.

Priorities for Detling

Speeding vehicles through Detling: The action has been to increase uniform patrols at problem times.

The parish council is actively pursuing volunteer Speed Watch observers for Detling.

Crime Theft from Buildings: The action has been to conduct high visibility patrols by PCSOs and PCs in the village, also giving advice on property protection and staying safe.

Litter and fly tipping: Tackling litter and fly tipping in rural areas needs the cooperation of the public to back up the visual and environmental audits carried out by the police. Police officers continue to work closely with Maidstone Borough Council on methods to combat this degrading aspect of village life.

HIGHWAYS

Contract Services

Road sweeping and litter picking is being carried out by Kent Highways along the following roads:

Every 6 weeks	The Street Pilgrims Way East Orchard View Hockers Lane Hockers Close	Queensway Princes Way Harple Lane Scragged Oak Road Church Lane (part)
Every 12 weeks	A249 Pilgrims Way West Pilgrims Way East (beyond the cricket ground) Hockers Lane (south of the Gateway)	

If your road has not been swept at these times, please contact the Parish Clerk.

The A249 Action Group

Contact: Lyle Cathcart

Established: 2003

I am able to report that the Group held two formal meetings during the year and a further meeting with the KCC Highways Transportation and Development Manager.

The substandard design of the A249 is recognised by KCC and it is disappointing that little immediate action is being taken to carry out improvements to bring the carriageways, slip roads, and crossovers up to a current recognised standard of safety.

However I can confirm that KCC have commissioned their consultants to prepare a report on "the overall safety scheme for the A249" which is expected to be available for consultation during May 2009. In addition, the action plan [by KCC] for the "Freight Management in Kent" is also expected during 2009, which will cover items such as HGV parking in lay-bys, overnight parking, HGVs in rural lanes and Operation Stack.

Routine maintenance of the A249 is to be carried out for up to three weeks commencing from 25 May 2009, which may necessitate lane closures.

The Group are extremely concerned over the lack of positive action to improve the A249 from its agreed present "sub standard" design and will continue to press for this strategic road to be brought up to an acceptable standard and is intending to have future quarterly meetings of the Group with all representatives.

PARISH OPEN SPACES

The Parish is dissected by a network of 24 separate footpaths, bridleways and byways totalling 10.7km in length.

There are an extensive network of footpaths, bridleways and byways in the Parish, in varying condition and with good and poor way markings. A survey of all paths is still to be conducted in conjunction with KCC's Parish Paths Partnership, as the starting point of a proper maintenance plan.

The Larches

Contact: Tim Bell (Head Ranger)

Established: 1976

01474 - 823800

The main tree works carried out at the Larches was the management of trees for health and safety purposes. Sadly a few more of the veteran Beeches had to be felled or had extensive tree works carried out due to their proximity to the road and the permissive bridlepath along the lower section of the site. These trees are all examined by specialists who prescribe the work we need to carry out in order to ensure they are deemed safe. The felled wood that is left on site is valuable habitat particularly for adders, so please leave the deadwood in place.

In addition, a further 1 hectare of invasive Sycamore was removed from the western edge of the site. Over 5 years we have removed a total of 5 hectares of Sycamore and treated the re-growth every other year. This has helped encourage more light onto the woodland floor and also created space in the canopy for other species, in particular Ash to grow. This timber is either chipped and spread on paths or left as habitat piles on site.

In liaison with Natural England it has been agreed that in the Autumn the lower compartment in the grazing area will be mechanically flailed and the arisings burnt on the site. This is necessary to clear the dense cover of dogwood and other woody species. Once cleared the aim is to try and have small scale grazing all year round to try and encourage the chalk grassland species to flourish.

If anyone witnesses fly tipping on Hermitage Lane please report any fly tipping to the KCC on **01622 602162** as the lane is a green by-way.

If there are any questions you have regarding the site please call **01474 823800** and the rangers will be happy to answer any questions.

We would also like to encourage anyone that uses the Larches to send any sightings of animals, insects, reptiles or birds to the Kent Biological Record Centre so that an ongoing database of wildlife sightings can be recorded.

This can be done through calling **01622 685780** or the website at **info@kmbrc.org.uk**. These records can be accessed by anyone upon request and will create a valuable record for the future.

Quiet Lanes

Contact: Jean Roberts and Mike Denny

Established: 2004

01634 – 370617 and 01622 - 631807

Detling and surrounding parishes are located in an area of largely unspoiled natural beauty dissected by a network of narrow lanes. Unfortunately many of these lanes are suffering from improper use which is destroying verges, disfiguring the environment and threatens the safety of pedestrians and other road users.

The Quiet Lanes scheme aims to set up a network of lanes where the attitudes and behaviour of vehicle drivers are sensitised, verges are restored, and walking, cycling and horse riding are encouraged. A scheme already operates in parts of Britain and including an area south of Maidstone. Under the auspices of the Mid Kent Downs Steering Group this now covers the 14 parishes north of Maidstone, including Detling.

An outline proposal has been prepared piloted on the Pilgrims Way, which passes through five local parishes, and approved by the Mid Kent Downs Steering Group. The project includes ideas for improving the appearance and safety of the lane through speed limits, planting and road narrowing, with designated passing places and pinch-points. The project has been taken to Kent Highways who have been asked to help take this forward; unfortunately they have been slow to respond in a constructive way.

Scragged Oak Viewpoint

Contact: Robin Grimble

Established: 2002

01622 - 735057

Scragged Oak Viewpoint is the triangle of land between Scragged Oak Road and the A249 containing beech woodland and chalk grassland known for its biodiversity and glorious views over the Kent countryside. In the 1990s the area became an eyesore and a place for fly-tipping and anti-social behaviour.

Kent Highways have granted Detling Parish Council a formal 'licence to cultivate' and the council is now managing the site. The area will be trimmed and cleared during the course of the summer.

Old School Playing Field

Contact: Geoff Cosgrove

Given to the Parish: 2009

01622 – 630462

This was the site of the playing field, which was to the rear of Detling Primary School, originally donated by Robert Rugg of East Court to the Church in 1856. The playing field was added in 1971, having been purchased from Edward Haynes Tarrant Hubbard of The Manor House, Detling on 8th August 1933. The field was used up to 1968 for hay making by Mr Brown, the local farmer.

The side access road was transferred to KCC by the Parish Council in November 1969 and the rear junior block together with the new playing field was added by KCC and the school extension was opened in 1971.

Due to falling pupil numbers the school closed in August 2007.

Detling Parish Council campaigned for over 25 years for an open space in the village and in March 2008 successfully changed this area designation to “Public Open Space”.

Kent County Council kindly donated this field to the Parish Council in January 2009.

Using grants we were able to fence the field and put in a path and gate. We have purchased some goal posts and now hope to add some seating to be made for us by the Blackthorne Trust and kindly donated in memory of local residents.

If anyone has ideas as to the future use of the field, such as other sport uses or to hold a village fete then please contact the Parish Council and we will see if we can support such initiatives.



Horish Wood

Contact: Geoff Cosgrove

Purchased for the Parish: 2005

01622 – 630462

Over the past year we have seen the start of the transformation of the wood. When we first took ownership it was very difficult to get more than a few yards into it, there were masses of brambles, fallen trees and branches and a lot of scrub and bushes. In short the wood was struggling to survive.

But John Monk started to work voluntarily throughout the autumn and winter, a few hours every day and has managed to open the wood up. Rediscovering the old rides and creating a circular path, he has also cleared the fences erected by CTRL and re-used them against the motorway to stop dogs running out onto the road. So a big thank you to John for his hard work, it is very much appreciated.

There is much still to do. We have a Management Plan written by the Kent Wildlife Trust and need to be constantly reminded and guided by it in our ongoing decisions relating to the future of the wood. Our original aims remain, in that the wood and grassland is for the education and enjoyment of the community.

We need to complete the fencing so we can all use the woods in safety. We need to thin out the canopy or coppice sections to provide fuel and more importantly to get more light onto the woodland floor in order to encourage a greater diversity of plants and wildlife. The Parish Council will be seeking specialist advice on the future management of the woodland in the coming months.

This year we saw a good spread of bluebells at the edges. Like any area we have found abandoned cars and other fly tipping which we need to remove, but this needs to wait until the ground is firmer.

By removing the wire fences to the open grassland John has helped create an area that is a pleasant circular walk. There is a narrow gap next to the gate so no-one needs to climb the gate to gain access.

Bredhurst Woodland Action Group

Contact: Vanessa Jones

Established: 2005

07813 - 785940

www.bwag.org.uk

The Bredhurst Woodland Action Group (BWAG) has had another successful year and held many nature related and social events throughout the year. It was due to the achievements of the group that Bredhurst won the title of Kent Village of the Year in the environmental category last autumn with the judges commenting that the project was not only of regional importance but was also of national significance.

Another achievement is the experimental scheme, introduced by KCC to restrict vehicular access to the woods which has now been made permanent. Bredhurst is only the second place in the UK where a scheme of this type can be found.

We have also had more support from the Royal Engineers who have recently renovated another 500m of woodland track creating a circular route for users.

It is also encouraging that in the recently coppiced areas both Early Purple and Fly Orchids have been found. Kent Wildlife Trust is extremely pleased that their programme of restoration is already showing such promising results.

Since it began in 2005, BWAGs official status has been as an Advisory Committee to the Parish Council. Now with nearly 350 members and funding secured of almost £85,000 the group has recently been approved as a registered charity and will now operate independently of the Parish Council. This will open up even more funding opportunities which will help to preserve this important area of land for future generations. For more information, please visit www.bwag.org.uk

CONSERVATION AREA

The concept of conservation areas was introduced by the Civic Amenities Act of 1967, but the relevant legislation is now contained in the Planning (Listed Buildings and Conservation Areas) Act of 1990. This places a duty on local authorities to designate conservation areas where appropriate. Conservation Areas are defined in the legislation as “areas of special architectural or historic interest, the character or appearance of which it is desirable to preserve or enhance”

The Street from just above the Cock Horse Inn down to Hockers Lane has been designated a Conservation Area. This means that the overall appearance of the heart of the village is special and needs to be preserved. The following is an extract from the appraisal that Maidstone Borough Council made during last year.

“The Detling Conservation Area represents a good example of a traditional Kentish village which has retained a high proportion of its historic development and has not suffered to an appreciable extent from redevelopment in modern times. Those modern buildings which do exist for the most part are either discretely sited or are self-effacing in design and built of appropriate materials. In fact the major agent of loss of character has not been redevelopment but the cumulative impact of individually relatively minor alterations such as replacement windows and doors and changes of roofing materials. In the case of single dwelling houses these alterations have been “permitted development” in the absence of any Article 4 Direction and thus outside of planning control.

As single dwelling houses comprise the vast majority of buildings within the Conservation Area the damage has been great, and very few unlisted buildings within the village centre have remained immune from such changes. Having said this, most of the alterations would be easily reversible.

The current character of the Conservation Area is strengthened by the consistent small scale of building and the dominant use of a limited palette of appropriate largely local materials – red and yellow brick, tile hanging, render, plain clay tiles, etc. It will be important for any proposals for new development to respect these aspects and also to take account of the existing pattern of development, particularly the differences between the two sides of The Street. Generally, therefore, proposals for development of more than two storeys will be considered inappropriate; bungalows, too, will be out of character. A high standard of architectural design will be required”

LOCAL BUSINESSES

Local Services

Detling has a number of local businesses. We have been under the threat of closure of the village Post Office Services as it has been up for sale over two years now. We have lost the school and we do not want to see the pub or shop go either, as that will have a devastating effect on our village fabric and life.

We have, amongst others:

The Village Stores and Post Office
The Cock Horse Inn

Kentish Belle Garage
Kent County Showground

The Cock Horse Inn

Contact: Colin & Jackie Howarth
www.cockhorseinn.co.uk

Established: 14th Century

01622 – 737092

Thanks for taking the time to read our monthly newsletter I am sure you will find the contents of interest to you. Fred our gardener has been very busy preparing our garden in time for the nicer weather and longer days which are now not too far away. We would like to invite you to come along to The Cock Horse Inn to sample some of our freshly cooked local ingredients from our frequently changing menu, great offers and excellent service.

Our 2 courses for £9.95 continue to be very popular and is available Monday to Thursday at lunchtime and in the evening this menu also changes often with a selection to cater for all tastes

On Sunday, we offer a choice of roasts; beef, lamb, pork or chicken served with all the trimmings and a huge Yorkshire pudding and at £8.95 continues to be very popular and from the many satisfied customers has been very much value for money.

We hold a quiz night every Thursday, which at only one pound to take part includes a lovely bit of supper with a bottle of wine from our wine list for the winners, and also a rollover jackpot which has in the past reached the dizzy amounts of over £100 before being won recently, but be assured we will observe the winners decision to attract no publicity at winning such a life changing amount.

Once again please accept our thanks for reading this and we hope to see you soon.



Detling Community Enterprise Community Interest Company **Ltd**

Contact: Richard Finn

Established: 2007

01622 - 631478

This has been a frustrating year for the Directors as we have had difficulty in talking with the Solicitors and Agents of the School Trustees. We do now have an understanding of the economic rent for the school premises and are looking for possible tenants.

We continue to search for the descendents of Robert Rugg, the original donor of the land on which the school was built.

Kent County Showground

Contact: David Goff

Established: 1923

01622 - 630975

The last year has seen business remain at a static level despite all the many challenges going on in the financial world. Many of the familiar events are still with us, some have gone and some new ones have started. The largest increase has been in the use of our conference facilities which are being used by a number of organisations for training and updating their staff. The location of the showground makes it ideal for people to reach with the good motorway network.

The Detling Downs Project is moving forward and although progress is slow all the aspects to get us to the planning stage are being considered. It is hoped to be able to report to a larger audience in the next few months.

The 2008 Kent County Show was not blessed with the best of weather forecasts and the attendance was down on previous years. The show was still well received by those who came and in particular the traders who reported a good show. Visitors had one of the most interactive shows for many years. The interactive message is one that various sections are keen to develop in the future.

The first County show was at Gravesend in 1923 and moved around the County until 1946 when it was held in Mote Park, Maidstone until 1963 when the ground at Detling was purchased.

Therefore the 2009 show will be the 80th given the War Years when the show was not held. There will be celebrations and demonstrations to mark the changes in agriculture over the decades.

All in all another good year for the Society.

This year's County Show is over the period 17th, 18th and 19th July 2009

The Village Stores

Contact: Mike Tamsett MBE

Established: 1870's

01622 - 738935

Despite the worst recession seen in recent times, Detling Stores is still surviving and we are soon approaching our 25th anniversary in December. There have been many changes during this quarter of a century and this year has provided its fair share.

The relocation of Mid Kent Electrical to Sittingbourne has hit the shop hard. We have made many friends with their work force over the years and miss the daily banter as well as their constant trade

but we wish Martin and staff all the best in their new environment. Coming so close to the school closing and the Kentish Belle finishing, the street has become a much quieter place.

However, on the positive side we welcome the continuing success of the playschool group and hope they continue to flourish.

The credit crunch and banking fiasco has in a strange way been good for the post office. National savings and post office financial products (Bank of Ireland), because of their 'safe and trustworthiness' have been very popular and given the post office a real boost. E-Bay customers, trying to raise some extra cash, have also given us a welcome bonus and kept royal mail busy.

May I once again thank all our regulars for their continued support and remind all villagers that the lottery, news papers and magazines, postal services etc. cost the same anywhere but by using your local store, even just for these products, you will continue to have a local store.

PARISH ORGANISATIONS

The Parish has for its size a very active and varied social life. Here are the annual reports of our Parish Organisations:

Detling Badminton Club

Contact: Mark Chase

Established: 1976

01622 - 736818

The club has been in existence for many years now and although we were once a thriving club competing in local leagues, the popularity of the sport has declined recently. Seven of us now regularly turn out on Sunday and Tuesday evenings 8-10 p.m. at the Detling Village Hall.

Badminton is a good way of keeping fit and having a good deal of fun along the way. We are always on the look out for new people to come and join us so if you fancy a go why not come along.

Detling Short Mat Bowls Club

Contact: David French

Established: 1984

01622 - 750369

The past year has been fairly busy with our participation in the Maidstone Triples League, in house competitions and with some members playing in Kent County Competitions. During this year the Club has achieved second place in Division 2 in the League after a number of hard fought games and I would like to take this opportunity to thank the Team Members who took part.

The Bowls Club meets every Monday evening in the Village Hall at 7.30pm until 10pm.

New members would be made welcome; it does not matter if they have not played before as we have a number of talented players who willingly will give help and tuition.

For further information please contact myself on (01622 750369) or pop in on Monday evenings for a chat or just watch to see if Short Mat Bowls is for you.

We look forward to seeing you.

Detling Cricket Club

Contact: Gerald Creasey

Established: 1897

01795 - 429241

Submitted by: Andrew Archer

<http://detling.play-cricket.com>

Home Ground : Pilgrims Way, Detling.

For the 1st time in over 10 years, the club organised winter indoor nets, which were very well supported and this support has continued into this season.

The season is now underway and after losing the first 4 games we have won the next 4 including the first Kent Village league game. For the 2nd year running we narrowly missed promotion last season and with the league looking very strong it will be a difficult task again.

Colts cricket was started early this year with a friendly against Leeds & Broomfield and we hope to continue to run these games throughout the summer.

Practice nights are held on Tuesdays at 6.00pm for both colts and adults

Fixtures can be viewed at <http://detling.play-cricket.com>

The Detling Players

Contact: Jenny Pember

Established: 1975

01622 - 753562

John Munson (Chair 2007 – 2009)

www.detlingplayers.co.uk

After a slightly unsettled period during the previous twelve months, the players have re-emerged firing on all cylinders.

A very enjoyable and successful production of "The Railway Children" has been followed in recent weeks by an equally successful production, directed by Gavin McLaggan of "The Benefactors", by Michael Frayne. This was a first for The Players, in that the last night was enjoyed by an audience that also enjoyed a first class hot supper!

The Players have in hand a project that it is hoped will involve many others from our community. Richard Finn is leading The Players in a proposed production for next Spring, "The Detling History Play", anyone, young or old, interested in being involved, may contact The Players on 01622 630231.

We are also on the point of announcing a planned production for our November slot in the Village Hall. These certainly are lively times for this local dramatic society.

There has been a sad note for our members in the sudden and unexpected death of Richard Odell, who had been a very active member of the group for many years. Richard has been much respected and admired for the splendid and highly creative sets that he has designed for recent plays, including the two recent productions. His presence will be greatly missed.

The Detling Singers

Contact: Edward Rubie

Established: 1974

01622 - 880404

The Detling Singers gave concerts at the following venues during the year:

May	-	Maidstone Mencap for Invicta Gateway Club.
August	-	Babchild Church for the Flower Festival.
September	-	Music with the Friends of Detling Church.
December	-	Upchurch Village Hall for Rainham Flower Club.

Grove Green for Maidstone Friends of Music.
Christmas music & concert at Hartlip Church.
Cobtree Hall for Maidstone Mencap.
Carols at The Heart of Kent Hospice.

The programme for 2009 includes a concert following the St George's Supper evening at Rochester & Cobham Park Golf Club.

We look forward to reviving the tradition of a Christmas Concert and thank the WI for making this possible for December 2009.

Reserve the date for this special event on: Saturday 12th December 2009

We continue to meet regularly to sing on Monday evenings in the school hall, new songs are learnt and old favourites revisited.

The choir has vacancies for sopranos, altos, tenors and bases. A warm welcome awaits anyone interested in joining us for an introductory evening of part singing. For more information please contact Edward Rubie (01622 880404).

Detling Friends Of Heart Of Kent Hospice (Dfhkh)

Contact: Pat Dale

Established: 1987 - 2004

01622 - 737577

The Friends concluded their remarkable fund raising efforts as an organised group five years ago, but they have continued to keep in touch and hold the occasional coffee morning.

Detling Church

Contact: Rev'd Susan Hollins

Established: 13th Century

01622 – 758606

Submitted by: David Humfrey

The number registered on the electoral roll at the 2008 APCM was 58, compared with 47 in 2007.

The average Sunday attendance at services was 25, but this number has considerably increased at festivals. Weekly sung communion services are held at 11:00 am on Sundays, interspersed with all age services which focus on children, young people, and the family. Church attendance has continued its gradual but encouraging growth since the last report, attributable, partly, to the regeneration of the choir, the completion of the structural alterations of the church fabric and also the enthusiastic leadership of the churchwardens and Tikki Gulland supporting our assistant priest, the Rev Elizabeth Attaway in planning the all age services.

2008 has seen the completion of our building alterations, with the objective of making our church more amenable and friendly to the congregation, supporters and visitors.

Specifically, this has involved:-

- a. The completion of a water supply, toilet with disabled facilities, and a kitchenette.
- b. The furnishing of cupboard space in the vestry, which now doubles up as a vicar's and choir vestry. This has provided space for vestments, books, cleaning equipment etc.
- c. The remodelling of the north aisle, the removal of the old pews, a new floor with carpet and the purchase of comfortable chairs – all with the objective of providing a flexible space for activities, such as meetings and an area for the young.
- d. The completion of a new, smooth path alongside the old cobble stones.

- e. The removal of the old oil-fired heating system, and the installation of an electrical system of storage radiators and wall heaters.

All of these measures have been funded from our church reserves, which have been maintained by earlier bequests and generous fund-raising by the Friends of Detling Church through their concerts and other events. The structural and other work was largely completed by the end of 2008, with electrical work on the heating running over into the early months of 2009.

Regular worship has continued thanks largely to the tireless dedication of our non-stipendiary priest, the Rev E Attaway, the churchwardens and our organist, Mr Tim Cathcart, who has established regular choir practices and the preparation of occasional anthems for church festivals.

A bible study group meets monthly, and a Lent Course is held annually.

Other Activities:

Living Stories – This group brings bible stories to the Pre-School Unit which meets in a building of the Detling C of E primary school which closed in 2007.

Detling Companions – This pastoral group provides contact with the elderly and sick making regular house visits quarterly tea parties with entertainment in the village hall, and coffee mornings in group leaders' houses. Transport is also arranged for doctors or hospital visits, or the collections of preparations.

Christmas Eve Event – This annual 'Search for the Christ Child' is held at 3.00pm, starting in the church and following the story of the shepherds and kings in a journey through the village via the Inn and the Stable. Children and parents in groups of 50 are led by shepherds and Roman soldiers, finally at the nativity scene with the Holy Family. This event has become increasingly popular, attracting visitors from as far afield as London and Canterbury. This year's attendance was 300.

Plans for the Future:

Having been without an incumbent for 18 months it is hoped that present applications for the benefice of Boxley and Detling will bear fruit. In the meantime, following the fabric improvements, fine tuning of the new heating system is underway. The next Quinquennial Inspection and report is anticipated.

As we go to press (April 09) we are pleased to announce the appointment of our new Priest in Charge, Rev Susan Hollins, who will be installed on 11th May 2009.

Friends Of Detling Church

Submitted by: Margaret Cooke

Established: 1989

01622 - 737987

Two events at the Croft started 2008, in January a Cheese and Wine Party and in April a recital of Chamber Music by Master Degree Students from Christ Church College Canterbury. On a beautiful day in May we held the Welcome Lunch for newcomers to Detling in the grounds of "West Court".

Details of the many activities and clubs you can join in Detling were on display. If you are a new arrival to Detling and missed this event, the next Welcome Lunch will be in 2010.

The evening of Midsummer Day very luckily turned out warm and dry for the "Jazz U Like It", again in the garden at "West Court". This raised a wonderful total of £638 profit, and all who came were overwhelmed with enthusiasm for the superb music and wonderful setting.

The highlight of our achievements over the 20 years or so of money-raising was seeing the results when the new kitchenette and facilities were officially opened on September 27th. Everyone who visits the church is full of praise for the improvements inside and out and how much we enjoy coffee etc now served after services. The flower arrangers are grateful too for the water (hot and cold) now on tap in the church.

Our stall at the Christmas Fair helped to raise funds by selling books and gifts. Thanks to the generosity and support of the members of the Friends of Detling Church over £2,000 was raised over the year towards improvements and maintenance of our ancient village church. We are always looking for new members.

Do join us; you will get occasional newsletters with details of enjoyable social events. The annual subscription at present is £5 for single membership and £8 for family membership. Our present membership is 68. New ideas for fundraising are always welcome.

The Detling Companions

Contact: Gill Humfrey

Established: 2003

01622 - 730139

We continue to hold our quarterly tea parties in the village hall and we are glad to have such a pleasant and light hall in which to hold them. We would be even more pleased to have more of the village over fifties to join us and they would receive a warm welcome. We are always entertained with music and we have various speakers, slide shows and raffles etc.

There is always a happy atmosphere in the hall and the committee works hard to make the afternoons the success they have become. We have also held coffee and chat mornings in the home of one of our committee which are well attended.

As part of our care in the community we have visited the elderly and infirm and run errands and also carried out hospital visits.

The Detling Society

Contact: John Owen

Established: 1982

01622 - 737940

The Detling Society continues to hold meetings on the first Monday of each month in the period from October to April. Membership is about 18, with many members attending every meeting and we welcome a useful number of non-member visitors.

The Society tries to present programmes of local interest, and during the 2008-09 season we have had presentations on "Detling Memories", "Boxley Village" and "Tales of a Bishop's Wife (The Rev Jackie Cray)". Other subjects included "The 1936 Berlin Olympic Games".

The programme for 2009-10 starts on 5th October, and will be at our usual venue, the Committee Room of Detling Village Hall. Subjects for the season will include "Ischia and the Neapolitan Riviera", "Crime in Victorian Kent" and "The history and wildlife of the Royal Military Canal".

Pre-School Playgroup

Registered Charity No: 1022413

Contact: Debbie Hoy

Submitted by: Kate Robinson Secretary

Established: 1998

Pre-School Learning Alliance No: 29253

0798 – 683 4820

Ducklings of Detling Pre-School have, at present, the highest attendance on record. We have a small waiting list for September 2009.

The Pre-School prides itself on its achievements, especially since the school closed two years ago and there was concern that we wouldn't be able to stay on the site. Through determination and a bit of a battle we finally had confirmation that we were able to stay on the school site. The impact of that means the pre-school has increased overheads. We have utility bills, gas and electric, more insurances and increased staff costs. As a non-profit organisation this leaves little money to undertake repairs and replace large items. As a charity run Pre-School we rely on donations and fundraising alongside grants.

At present we are in the process of applying for a grant to improve the outside area. The project is large but exciting. We plan to put in more wooden play equipment, a sensory garden, a small allotment and tidy up the existing gardens as the warmer weather approaches. We also need two new gates, fencing, signage and another shed along with some ancillary items. We are very proud of our outside area and is a unique selling point for our Pre-School, along with Ducklings being a classroom based Pre-school, and the children spend a lot of time outside during term time, and we want to make the most of our lovely grounds.

Ducklings of Detling Pre-school would like to take this opportunity to give a huge 'Thank You' to everyone who has supported us in the past, present and we hope to have your continued support in the future. We could not run the Pre-School without your help and input and it is very much appreciated.

Ducklings of Detling Pre-School have a lot to offer and we welcome children from 12 months to school age. We have a few vacancies available. **Please contact Mrs Hoy on 97986 834820**



The Womens Institute (W.I.)

Contact: Ann Spain MBE

Submitted by: Eunice Hardman

Established: 1949

01622 - 676773 or

01622 - 736674

Detling membership is currently 36 with an average attendance of 30. Our programme secretaries once again did us proud with an interesting and sometimes amusing variety of speakers; namely hand bell ringers (with audience participation) not as easy as you think! National Trust buildings and gardens (wonderful photography), bee keeping, perennial planting through the seasons. A talk entitled 'When we were young' displayed some wonderful old toys, whipping toys, wooden and china dolls, to name but a few.

Voluntary work continues with the Heart of Kent Hospice, Save the Children, Age Concern, Friends of Detling and Boxley churches and the Salvation Army.

We celebrated Shrove Tuesday with our annual Punch & Pancake evening, the first of our fund raising events towards the village Christmas concert (our nominated charity for 2009)

Coffee mornings and strawberry cream teas are fund raising events to follow later.

An outing to the V&A museum for an Anthology of Hats was one of the highlights of the year, followed by a trip to Cliftonville visiting Walpole Bay Hotel for lunch, after which we were taken around their 1940's museum.

We look forward to our 60th Anniversary dinner in October marking many memories for Detling WI.

Yoga

Contact: Lindsay Tisdall

Established: 2002

07905 010 393

Yoga in Detling – dispelling some myths!

If you have never tried yoga before, you may have the image of these perfect bodies performing acrobatic backbends and pretzel-like postures. But that is far from true. Were that the case there would not be an explosion of yoga classes in the UK and elsewhere. So what attracts these tens of thousands of people? What do they get out of their yoga?

To begin with, you are not required to be young, or in perfect physical shape to do yoga. Yoga is vastly adaptable. It works if you are simply alive and breathing! Many people report that yoga makes them feel stronger, more balanced physically and mentally. They say they feel 'different' but can't quite put their finger on what exactly has changed their lives for the better.

I have students who say yoga has improved their strength, their balance, and their posture. Some students are also surprised to find that after a lifetime of not being able to 'relax', they find themselves relaxing for the first time at the end of one of the yoga sessions. Students have also commented on how yoga has helped with back problems, with knee problems, and more.

I have students in their 80s who say yoga practice has helped them to sleep better, to help them recover from operations and remain calm in hospital.

Yoga works on your flexibility and strength, protecting your joints, maintaining and improving your body. Yoga can improve your breathing and teaches you techniques you can use in your daily life to de-stress and support your physical lifestyle, be this sport or to make up for long hours behind a desk or at a computer.

And unlike gymnastics etc, yoga is something that you can practice for as long as it proves useful to you, physically, mentally, emotionally or any combination thereof. The reason more and more people take it up and explore what it can do for them, is that yoga works – for whatever reason.

But don't take my word for this. Come to Detling Village Hall to try it for yourself. In view of the current economic conditions (and despite the fact yoga classes are reasonably priced), yoga might still be a luxury for some people. In recognition of this, and with the kind support of Detling Village Hall, some **FREE** sessions are planned at the Hall (to be confirmed) but probably the first Tuesdays in July, August and September. These classes will be suitable for beginners and will help you determine if yoga is for you. If you are interested, please call Lindsay, as pre-booking is essential and numbers will be limited.

Detling Village Hall is a good venue for yoga, not your 'draughty, village hall' of yesteryear. The hall is spacious, light and airy, with views overlooking the countryside. There is a wood floor, mood lighting, a good central heating system, not to mention easy parking. It is an easy venue to find, as well as being accessible from the M20 (just off junction 7).

The British Wheel of Yoga is now aware of this excellent venue and its location and a number of special yoga days are booked throughout 2009 with many more in 2010.

Regular yoga classes are held in the Village Hall on Tuesdays between 6.00 and 7.30 pm.

For more information or to book call Lindsay Tisdall on 07905 010 393 or 07881 553 100. Lindsay is a British Wheel of Yoga Diploma teacher, having studied for 4 years with an additional 5 years teaching experience. Lindsay keeps her practice and teaching skills up to date by attending weekly classes and numerous workshops throughout the year. Lindsay also has her own regular practice and her passion for yoga has arisen out of her own yoga 'journey'. She only wishes she had discovered it sooner!

Pilates

Contact: Lisa Reilly

Established: 2009

07512 – 932415

Body Control Pilates is excellent for improving posture, increasing joint mobility and strengthening core muscles.

It is particularly beneficial for backpain sufferers or for those recovering from an injury because it teaches you to use your body correctly, recruiting the right muscles to perform each movement. It is extremely effective at correcting muscle imbalances.

Beginners are very welcome, either new to pilates or new to exercise, class size is small to allow for each participant to receive appropriate levels of attention.

At the end of a class you should feel taller, stronger and refreshed!

If you'd like to try it for yourself, I run classes on Wednesday mornings at Detling Village Hall. For more information or to reserve your place either call Lisa 07512 932415 or email lisa@healthyworld.uk.com.

Spangles

Contact: Jimena Shafto

Established: 2005

01622 - 735292

Spangles Spanish kids club, is a Spanish Club for kids aged from 3 to 16 years.

Spangles has been running for more than 4 years at Detling Village Hall, providing Spanish courses for the local community and further afield.

Set in a lively environment children sing, dance, play, talk, do crafts, and perform role-play, all in Spanish. A number of unique techniques have been developed by Spangles to enhance a very interactive approach to give each child the individual attention they need to progress easily.

For instance, last term the under 5 year old children prepared their own "ensalada de frutas" learning the name of the fruits, the group of 9 to 11 years old performed their second drama "Peter Pan de Vacaciones" "Peter Pan on Holiday" and last Christmas the group of 5-8 years old recreated the "Spanish Nativity Scene" all in Spanish.

Each child is awarded a vocabulary picture-sheet at the end of each lesson and parents can access an interactive member's only website to enable them to work with the children outside the classes.

Classes available for under 5s, 5-8 years, 9-11 years and 12-16 years.

Some of the benefits a child obtains at Spangles are:

- Stimulate imagination, creativity and memory
- Develop self-esteem
- Improve social skills
- Build confidence
- Introduction to Spanish culture
- Gain skills for life



The Jade Appeal

Contact: Caroline Hobbs
Submitted by: Ruth Bromley

Registered Charity No. 1087231
Established: 2001
www.jadecrossing.org

01622 – 737846

It has been a fairly quiet year for the Jade Road Safety Fund due to our members work/home commitments. However we are now starting to get going again with some new projects for 2009.

During March of this year we received a request for help from Grange Park School at Leybourne, near Maidstone. This is a school for autistic children between the ages of 11-18. The children are taught road safety on a regular basis and so are in need of road safety role-play items, cycle helmets, road safety related teaching aids and reflective clothing.

As we have contributed to a similar project that provided local pre-schools with the same type of equipment, (this included Detling pre-school who received a pack and also had their playground resurfaced with a road scene), the committee decided to donate £10,000 to this cause. We are currently liaising with Grange Park as to how the money will be put to the best use.

We would like to thank all those who continue to put contributions in the boxes on the bridge and who have supported us in the past. We have a new member on our committee and have been approached with the offer of a new police contact and so things are looking good for this year!

Please continue to support us and we would love to see you at our meetings.

FINANCIAL MATTERS

The parish council is able to raise money directly from the public in order to carry out its functions. Its powers to do this are found in Section 150 of the Local Government Act 1972.

This money is raised through the rates and is known as the Precept. It currently represents only about 3% of a householder's total rates bill. The splits for a band E property are about:

Kent County Council	69 %	an increase of	2.4% over 2008
Police Authority	9 %	an increase of	5.0% over 2008
Fire Authority	5 %	an increase of	3.5% over 2008
Maidstone Borough Council	15 %	an increase of	4.5% over 2008
Detling Parish Council	3%	an increase of	19.8% over 2008

Our precept also equates to £47.30 per house or £25.67 per electorate or about 7p per person per day. This coming year we voted to increase our precept to £15,939, this is an increase of £2.628 over the previous year. This is above inflation as the Councillors are keen to keep the parish on a sound footing, whilst still raising money outside of the Parish for all our projects and schemes. One of the reasons for such a large increase this year is that Detling runs on very low turnover and margins and over the past few years we have been drawing down our reserves to keep in line with auditor recommendations.

This precept is only 65% of the parish's annual income. The other money comes from specific grants and payments from the Borough.

Our other main source of income comes from the Borough Council's Concurrent Functions; this is a fund awarded to the more rural parishes of the Borough to use for a number of local activities and projects. We are able to do many things from this source but are aware that this fund may not be secure for many more years to come.

The councillors have also agreed not to draw general attendance expenses for their work on the parish council and give their time free.

Supporting Notes to Accounts Year Ended 31st March 2008

Borrowings.

As at the close of business on 31st March 2008 there were no loans to the Council outstanding.

Leases.

Detling Village Hall is leased to the Detling Village Hall Committee from 1975 until 2025. Rent is one pound per annum.

Car parking spaces at the Village Hall are rented to Kent County Council for ten pounds per annum.

Seeboard Wayleave. £8.19 payable every four years.

Debtors.

VAT £1,605.96

Creditors

Audit Fees £350.00

Outstanding Cheques.

Outstanding cheques amounted to £25.00.

Tenancies.

None.

Service Expenditure

Concurrent Functions Grant of £5,838.65 received from Maidstone Borough Council.

Advertising and Publicity.

Monthly Newsletter.

Pensions.

The Council made no pension contributions during the year.

Earmarked reserves.

The Cooperative Bank Account is an earmarked reserve for a recreation field for the Village.

This fund having previously been known as the Playing Field Fund. This was approved to be opened for use in support of the Old School Playing Field.

Concurrent Functions Grant for 2008/2009

Publicity	£ 1,450.00
Environmental	£ 3,940.00
Village Hall	£ 500.00
BALANCE	<u>£5,890.00</u>

To balance, this must equal the amount available from Concurrent Functions. It is this money that is NOT guaranteed beyond 2009. (IF NOT SPENT GOES BACK TO SOURCE)

<u>DETLING PARISH COUNCIL</u>					
<u>BALANCE SHEET</u>					
<u>FOR YEAR ENDED 31ST MARCH 2008</u>					
	<u>Year Ended</u>		<u>Year Ended</u>		
	<u>31st March 2008</u>		<u>31st March 2007</u>		
	<u>£</u>	<u>£</u>	<u>£</u>	<u>£</u>	
<u>FIXED ASSETS</u>					
		0		0	
<u>LONG TERM ASSETS</u>					
<i>Investments</i>	-		-		
<i>Long term Debts</i>	-	-	-	-	
<u>CURRENT ASSETS</u>					
<i>Stocks & Shares</i>	-		-		
<i>Re-imbursable VAT</i>	-		-		
<i>Debtors</i>	1,605.96		1,090.93		
<i>Temporary Lendings</i>	-		-		
<i>Payments in Advance</i>	-		-		
<i>Cash in Hand</i>	35,504.31		39,535.80		
	37,110.27		40,626.73		
<u>CURRENT LIABILITIES</u>					
<i>Creditors</i>	350.00		350.00		
<i>Temporary Loans</i>	-		-		
<i>Bank Overdraft</i>	-		-		
	350.00		350.00		
<u>Current Assets less Liabilities</u>		36,760.27		40,276.73	
		36,760.27		40,276.73	
<u>REPRESENTED BY:</u>					
<i>General Fund Brought Forward</i>	24,847.58		1,697.42		
<i>Surplus/(Deficit) for the Year</i>	(3,516.46)		24,041.13		
<i>Transfer to Earmarked Reserves</i>	(359.72)		(890.97)		
		20,971.40		24,847.58	
<i>Earmarked Reserves</i>	15,429.15		14,538.18		
<i>Interest on Reserves in Year</i>	359.72		890.97		
		15,788.87		15,429.15	
		36,760.27		40,276.73	
<i>The above statement represents fairly the financial position of the authority as at 31st March 2008 and reflects its income and expenditure during the year.</i>					
<i>Approved by Council on</i>					
<i>Signed.</i>		<i>Dated</i> <input type="checkbox"/>			
<i>Chairman</i>					
<i>Signed</i>		<i>Dated..</i>			
<i>Responsible Financial Officer</i>					

<u>DETLING PARISH COUNCIL</u>				
<u>INCOME AND EXPENDITURE ACCOUNT</u>				
<u>FOR YEAR ENDED 31ST MARCH 2008</u>				
	<u>Year ended</u>		<u>Year ended</u>	
	<u>31st March 2008</u>		<u>31st March 2007</u>	
	<u>£</u>	<u>£</u>	<u>£</u>	<u>£</u>
<u>INCOME</u>				
<i>Precept</i>		11,305.00		11,000.00
<i>Interest</i>		744.45		822.09
<i>Service Income</i>		5,838.65		5,787.96
<i>VAT</i>		1,605.96		1,090.93
<i>Rents/Hire Fees</i>		0.00		0.00
<i>Parish Plan Income</i>		0.00		10.00
<i>Other Income</i>		0.00		22.64
<i>Grants</i>		11,330.00		26,615.00
<u>Total Income</u>		<u>30,824.06</u>		<u>45,348.62</u>
<u>EXPENDITURE</u>				
<i>General Administration</i>	13,803.13		13,207.71	
<i>Service Expenditure</i>	5,892.83		4,917.85	
<i>VAT</i>	1,605.96		1,090.93	
<i>Horish Wood</i>	0.00		0.00	
<i>Other</i>	13,038.60		2,091.00	
<i>W/off unrecoverable debtors</i>	0.00		0.00	
<u>Total Expenditure</u>		<u>34,340.52</u>		<u>21,307.49</u>
<u>SURPLUS/-DEFICIT</u>		<u>-3,516.46</u>		<u>24,041.13</u>

